

# Hydro Spot 2



Light Efficiency:

25 Lumen/Watt

Light Quality:

CRI: 88.9

Color Temperature:

5559 K

Output: 10966 lm

Peak: 160553 cd

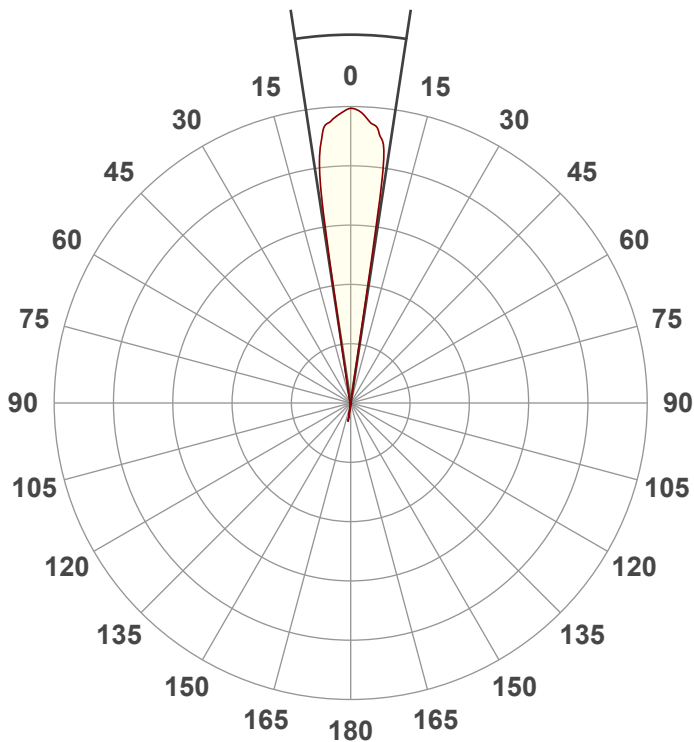
Power: 445 W

PF: 1.0



Beam Angle

17.4°



Test:

High CRI Zoom 50%

Date:

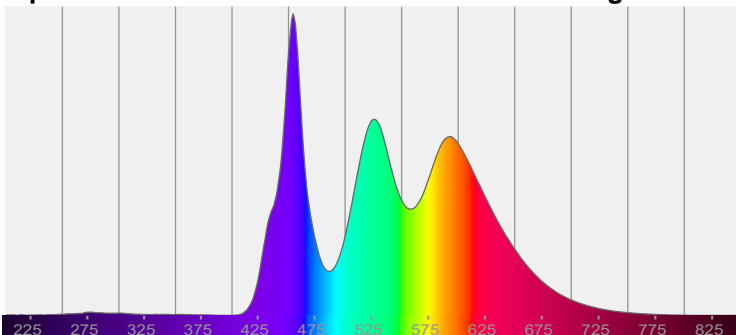
10/5/2022

Note:

CIE 1931  
x: 0.331  
y: 0.339

Spectra

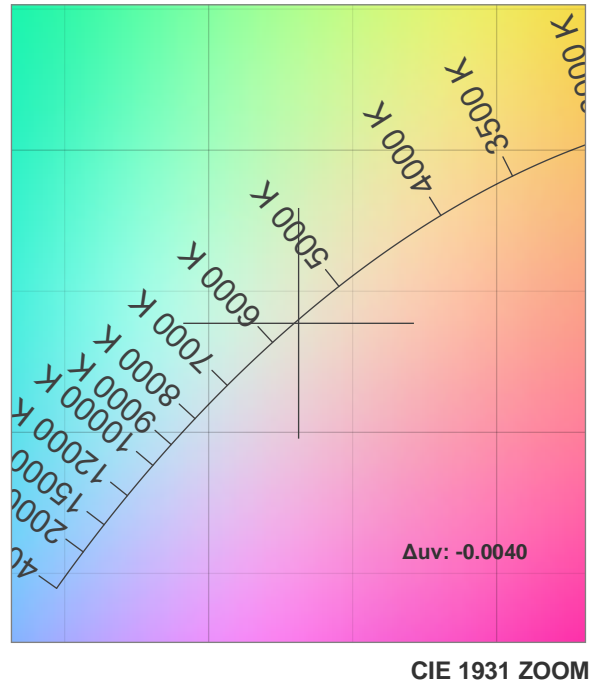
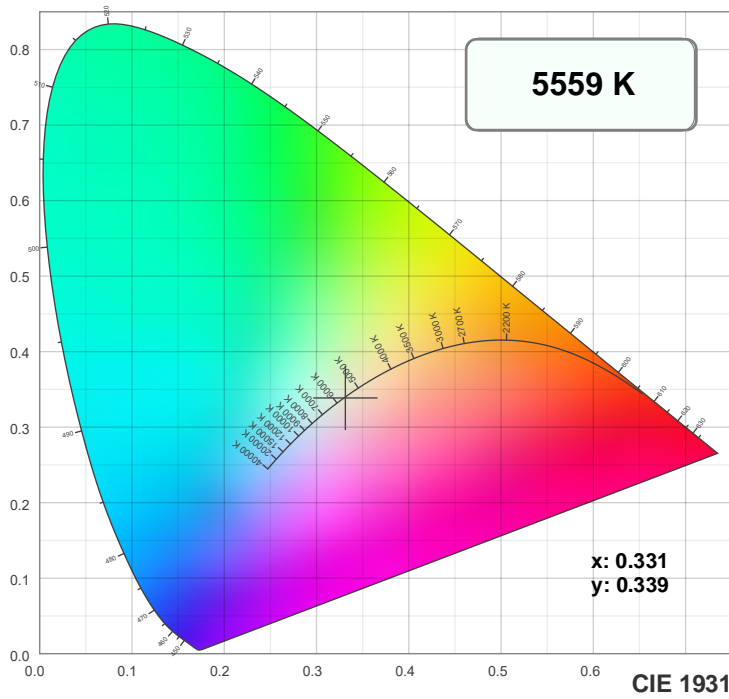
Dominant Wavelength: 586nm



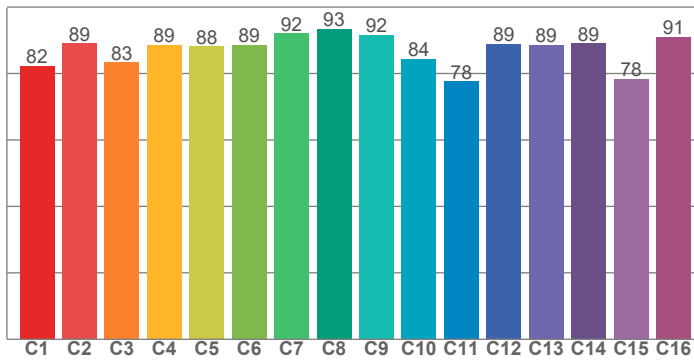
Power

Voltage: 119 V  
Current: 3.74 A  
Frequency: 0 Hz

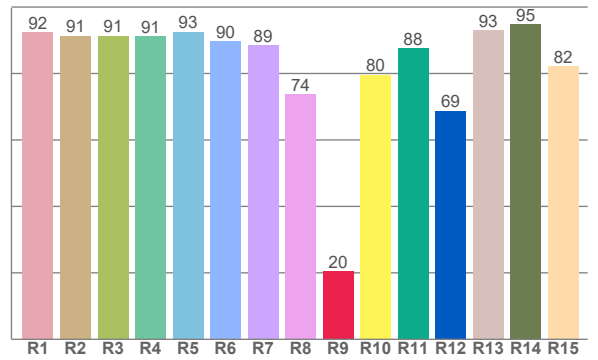
## Color Details



TM30: 86.7



CRI: 88.9 (R1-R8)



CRI R values, only R1-R8 are used to calculate final CRI value

R1	R2	R3	R4	R5	R6	R7	R8	R9	R10	R11	R12	R13	R14	R15
92.4	91.3	91.4	91.2	92.5	89.8	88.5	73.8	20.4	79.6	87.5	68.8	93.1	94.8	82.1

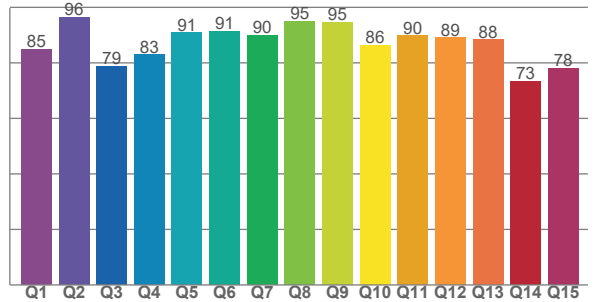
TM30 C values, 16 binned values out of total of 99 C values

C1	C2	C3	C4	C5	C6	C7	C8	C9	C10	C11	C12	C13	C14	C15	C16
82.3	89.0	83.3	88.6	88.1	88.6	92.0	93.5	91.7	84.4	77.6	88.9	88.5	89.0	78.4	91.0

CQS Q values

Q1	Q2	Q3	Q4	Q5	Q6	Q7	Q8	Q9	Q10	Q11	Q12	Q13	Q14	Q15
84.9	96.4	78.8	83.0	90.8	91.4	90.0	95.0	94.7	86.4	89.9	89.1	88.5	73.4	78.1

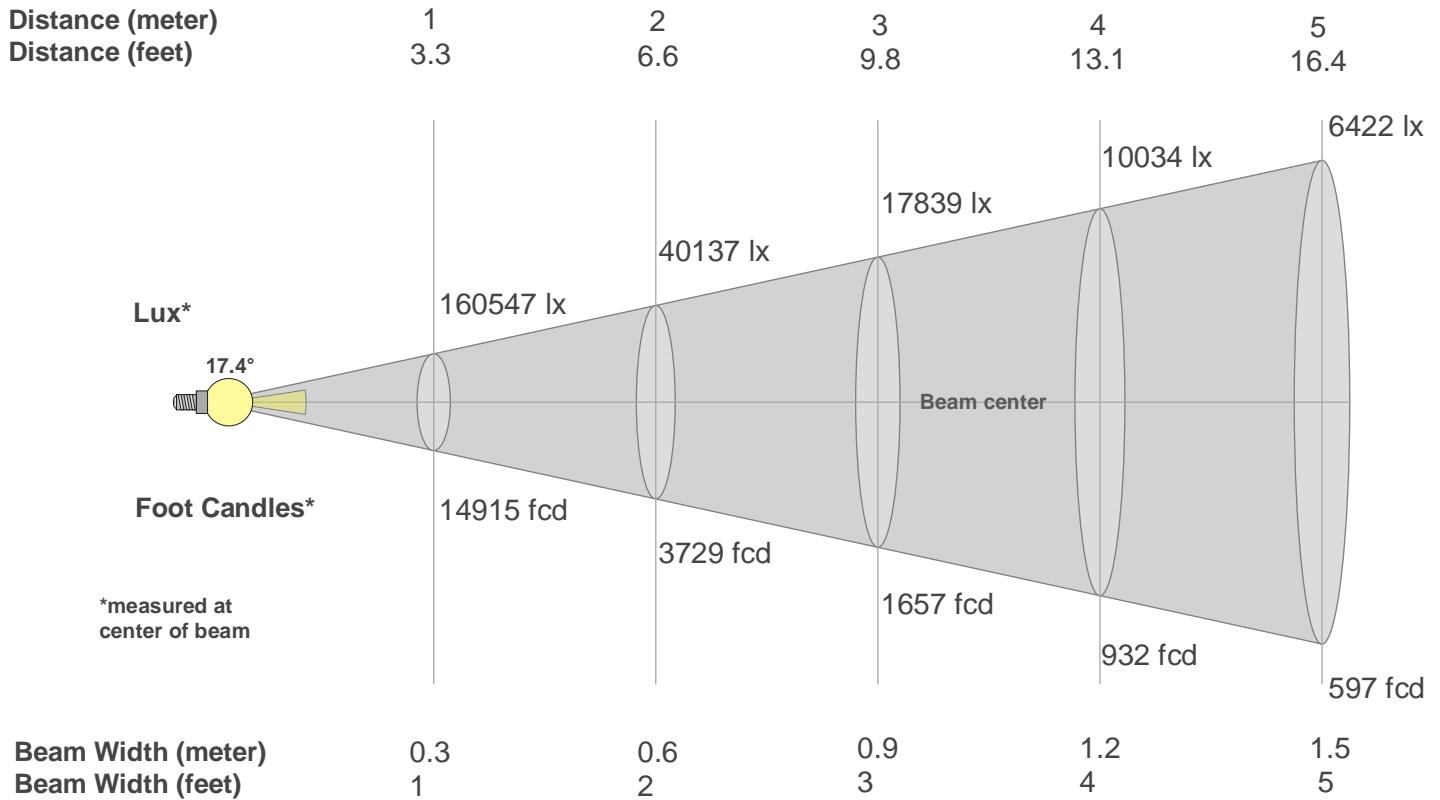
CQS: 85.8



## Color Parameters

Color Temperature	Color Rendering Index	Red Component	Color Fidelity	Color Gamut	Color Quality Scale	Color Coordinate CIE 1931	Color Coordinate CIE 1931	Color Coordinate	Color Coordinate	Color Deviation from Black Body
CCT	CRI	CRI R9	TM30 Rf	TM30 Rg	CQS	x	y	u	v	$\Delta uv$
5559 K	88.9	20.4	86.7	100.7	85.8	0.331	0.339	0.207	0.317	-0.0040

## Beam Details



Beam Intensities from 1-20m

m	1	2	3	4	5	6	7	8	9	10	11	12	13	14	15	16	17	18	19	20
ft	3.3	6.6	9.8	13.1	16.4	19.7	23	26.2	29.5	32.8	36.1	39.4	42.7	45.9	49.2	52.5	55.8	59.1	62.3	65.6
lx	16054 7	40137	17839	10034	6422	4460	3276	2509	1982	1605	1327	1115	950	819	714	627	556	496	445	401
fcd	14915. 3	3728.8	1657.3	932.2	596.6	414.3	304.4	233.1	184.1	149.2	123.3	103.6	88.3	76.1	66.3	58.3	51.6	46	41.3	37.3

Intensities in 0° C-plane

0°	1°	2°	3°	4°	5°	6°	7°	8°	9°	10°	11°	12°	13°	14°	15°	16°	17°	18°	19°
161K	159K	158K	156K	154K	151K	147K	131K	115K	64K	13K	6K	0K	0K	0K	0K	0K	0K	0K	0K
100%	99%	98%	97%	96%	94%	92%	82%	72%	40%	8%	4%	0%	0%	0%	0%	0%	0%	0%	0%

Intensities in 90° C-plane

0°	1°	2°	3°	4°	5°	6°	7°	8°	9°	10°	11°	12°	13°	14°	15°	16°	17°	18°	19°
161K	159K	158K	156K	154K	151K	147K	131K	115K	64K	13K	6K	0K	0K	0K	0K	0K	0K	0K	0K
100%	99%	98%	97%	96%	94%	92%	82%	72%	40%	8%	4%	0%	0%	0%	0%	0%	0%	0%	0%

Intensities in 180° C-plane

0°	1°	2°	3°	4°	5°	6°	7°	8°	9°	10°	11°	12°	13°	14°	15°	16°	17°	18°	19°
161K	160K	159K	156K	153K	151K	148K	135K	122K	61K	0K	0K	0K	0K	0K	0K	0K	0K	0K	0K
100%	99%	99%	97%	95%	94%	92%	84%	76%	38%	0%	0%	0%	0%	0%	0%	0%	0%	0%	0%

Intensities in 270° C-plane

0°	1°	2°	3°	4°	5°	6°	7°	8°	9°	10°	11°	12°	13°	14°	15°	16°	17°	18°	19°
161K	160K	159K	156K	153K	151K	148K	135K	122K	61K	0K	0K	0K	0K	0K	0K	0K	0K	0K	0K
100%	99%	99%	97%	95%	94%	92%	84%	76%	38%	0%	0%	0%	0%	0%	0%	0%	0%	0%	0%

Beam Angle 50%	Field Angle 10%	Cutoff Angle 2,5%	Intensity Ratio in 120° Cone	Intensity Ratio in 90° Cone
17.4°	19.7°	21.3°	100.0%	100.0%